

# B-600

## ALUMINIUM/STEEL BAR GRILLE FOR WALL MOUNTING



### VARIANTS

B-600, B-620, B-640, A-660

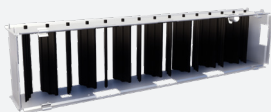
Bar grille, suitable for the supply and exhaust of cooled or heated air, with straight bars or with 15° deflection. The grille is suitable for wall mounting. Multiple mounting options are available. Economical solution with bars in aluminium and frame in steel, standard finish painted white (RAL9010).

#### Architectural finish

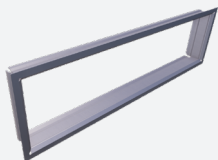
Fixed bars, center distance between bars 12,5mm or 16 2/3mm

Easy to install

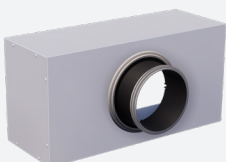
### ACCESSORIES



GT007



GR001



OP100

### TECHNICAL INFORMATION

APPLICATION	Type	Exhaust or supply
	Direction	Horizontal, fixed bars
CONSTRUCTION	Center distance between bars	12,5mm or 16 2/3mm
	Thickness of frame	5mm
	Available in 47 different standard sizes	200x100mm -> 1500x300mm
	Installation depth	34mm -> 43mm
MATERIAL	Standard material: Barres	Painted aluminium
	Standard material: Frame	Painted steel
	Standard finishing	Powder coating RAL9010
	Product finishing options	Powder coating RAL of choice
MOUNTING	Mounting options	Friction springs, concealed screw fixing



## QUICK SELECTION

Supply/Exhaust $Q_v$ [m <sup>3</sup> /h]		L [mm]									
H [mm]	$L_w$	200	250	300	400	500	600	800	1000	1200	1500
100	25 dB(A)	90	110	129	166	201	233	293	347	398	469
	35 dB(A)	146	179	211	271	327	380	477	566	649	765
150	25 dB(A)	132	162	191	245	296	343	432	512	587	692
	35 dB(A)	216	265	312	400	483	561	705	837	959	1130
200	25 dB(A)	174	213	250	321	388	450	566	671	769	906
	35 dB(A)	284	348	410	526	635	738	927	1099	1260	1484
250	25 dB(A)	-	263	310	398	480	557	700	830	951	1120
	35 dB(A)	-	432	509	653	788	915	1149	1362	1561	1839
300	25 dB(A)	-	-	370	476	574	666	836	991	1136	1337
	35 dB(A)	-	-	609	782	944	1096	1376	1631	1868	2200

## EFFECTIVE AIR DISCHARGE AREA

Supply/Exhaust $A_f$ [m <sup>2</sup> ]		L [mm]									
H [mm]		200	250	300	400	500	600	800	1000	1200	1500
100		0.0087	0.0109	0.0131	0.0175	0.0218	0.0262	0.0349	0.0437	0.0524	0.0654
150		0.0143	0.0178	0.0214	0.0285	0.0356	0.0428	0.0570	0.0713	0.0855	0.1064
200		0.0198	0.0247	0.0297	0.0395	0.0494	0.0593	0.0791	0.0988	0.1186	0.1493
250		-	0.0316	0.0379	0.0506	0.0632	0.0759	0.1011	0.1264	0.1517	0.1887
300		-	-	0.0462	0.0616	0.0770	0.0924	0.1232	0.1540	0.1848	0.2326

PRODUCT KEY

**GRILLE**

B	D	6	0	0	-	F	0	6	0	0	0	3	0	0
---	---	---	---	---	---	---	---	---	---	---	---	---	---	---

Nominal length L (mm):  
From 150 to 2000mm,  
per 25mm

Nominal height H (mm):  
From 100 to 1000mm,  
per 25mm

F: Coated

--: Grille in one piece

0: Grille without damper

- 0: 4 bars per 50mm (step 12.5mm), deflection 0°, no flow equalizer
- 2: 4 bars per 50mm (step 12.5mm), deflection 15°, no flow equalizer
- 4: 3 bars per 50mm (step 16 2/3mm), deflection 0°, no flow equalizer
- 6: 3 bars per 50mm (step 16 2/3mm), deflection 15°, no flow equalizer

D: Frame width 25mm, friction spring fixing  
E: Frame width 25mm, concealed screw fixing

**MOUNTING FRAME**

G	R	0	0	1	-	0	6	0	0	0	3	0	0
---	---	---	---	---	---	---	---	---	---	---	---	---	---

Nominal length L (mm):  
From 75 to 2000mm,  
per 1mm

Nominal height H (mm):  
From 50 to 2000mm,  
per 1mm

--: In one piece

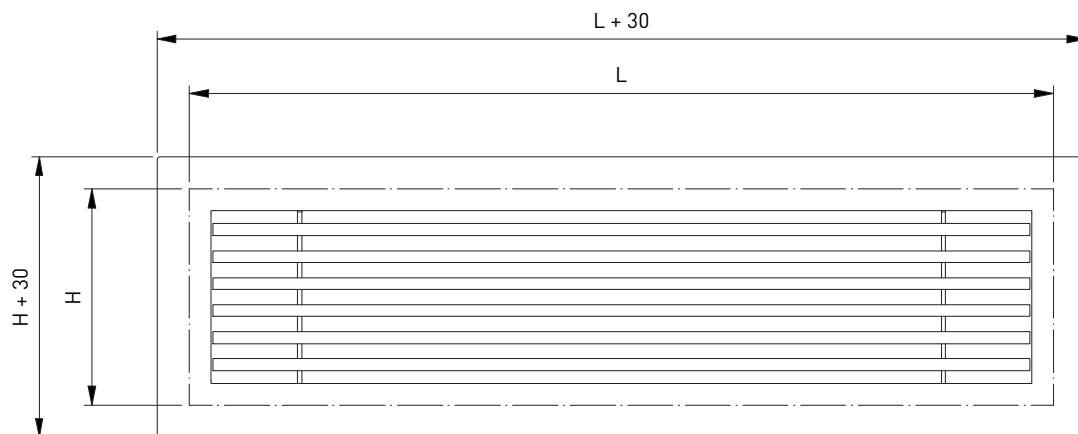
**OPPOSED BLADE DAMPER**

G	T	0	0	7	0	6	0	0	0	3	0	0
---	---	---	---	---	---	---	---	---	---	---	---	---

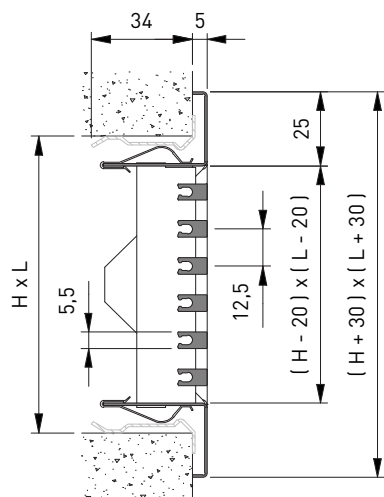
Nominal length L (mm):  
From 100 to 625mm,  
per 25mm

Nominal height H (mm):  
From 75 to 600mm,  
per 25mm

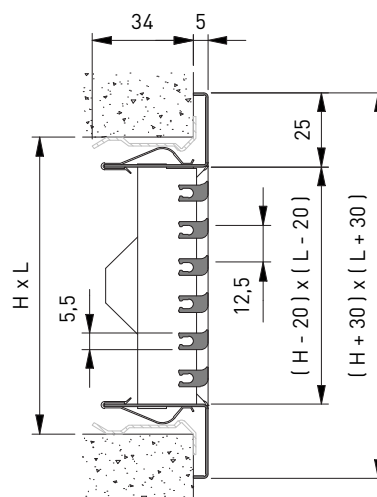
B-600



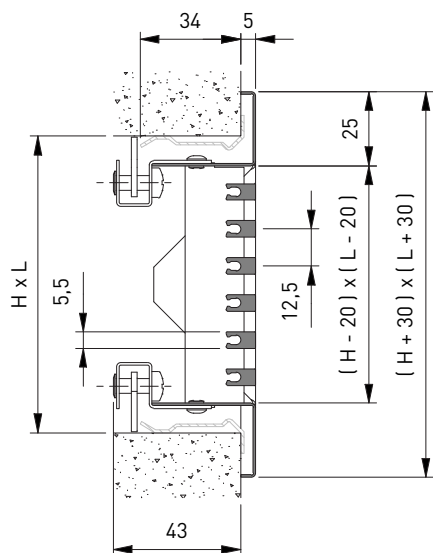
BD600 + GR001



BD620 + GR001



BE600 + GR001



BD640 + GR001

